



GUILDFORD  
B O R O U G H

**James Whiteman**  
Managing Director

[www.guildford.gov.uk](http://www.guildford.gov.uk)

Dear Councillor

**PLANNING COMMITTEE – WEDNESDAY 16 JUNE 2021**

Please find attached the following:

**Agenda No    Item**

7.    **Presentations (Pages 1 - 40)**

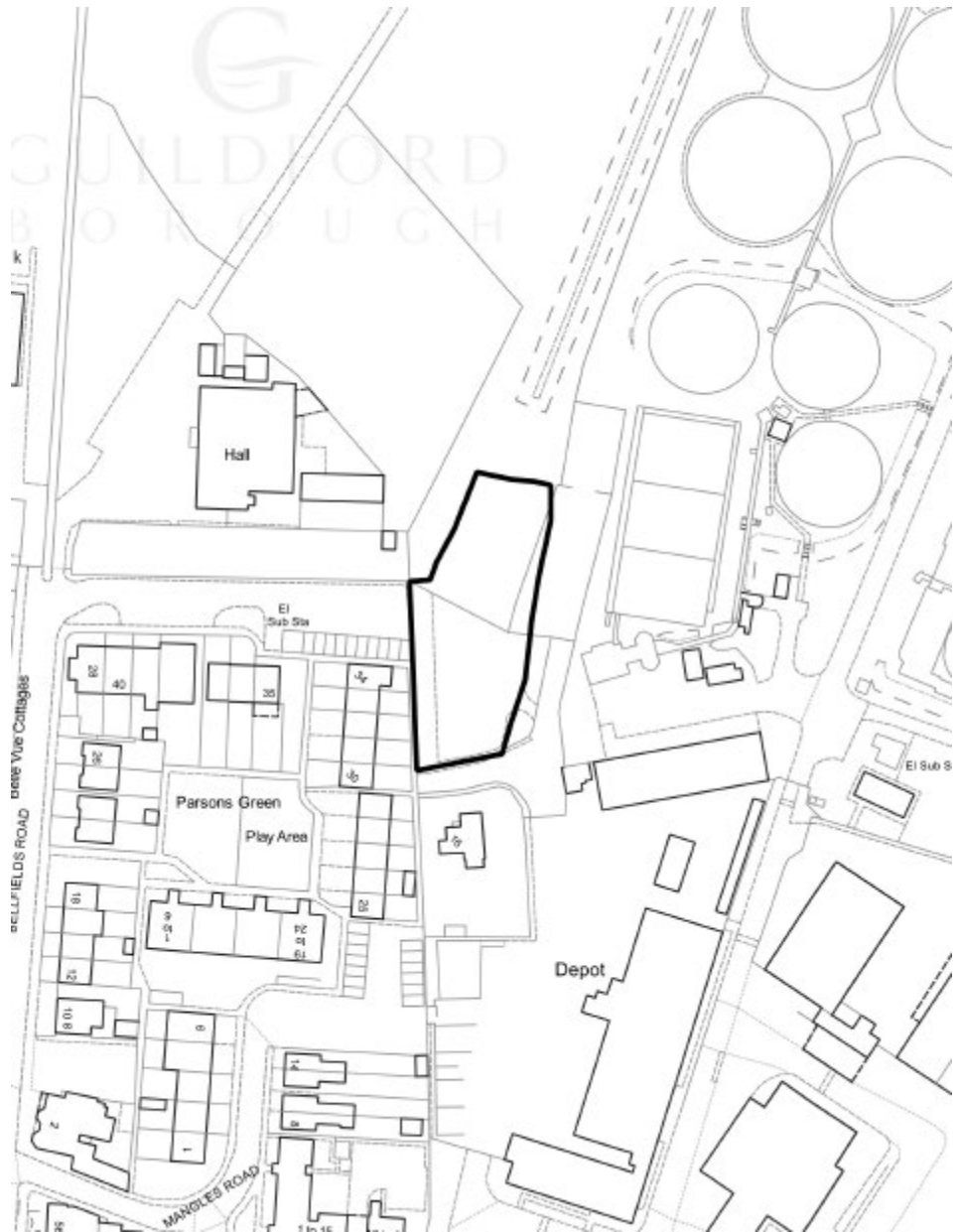
Yours sincerely

Sophie Butcher, Democratic Services Officer

This page is intentionally left blank

**21/P/00039**

**Land at Stoke and District  
Horticultural Society  
Club House  
Bellfields Road  
Guildford  
GU1 1QG**



**Location Plan**





**Proposed Block Plan**



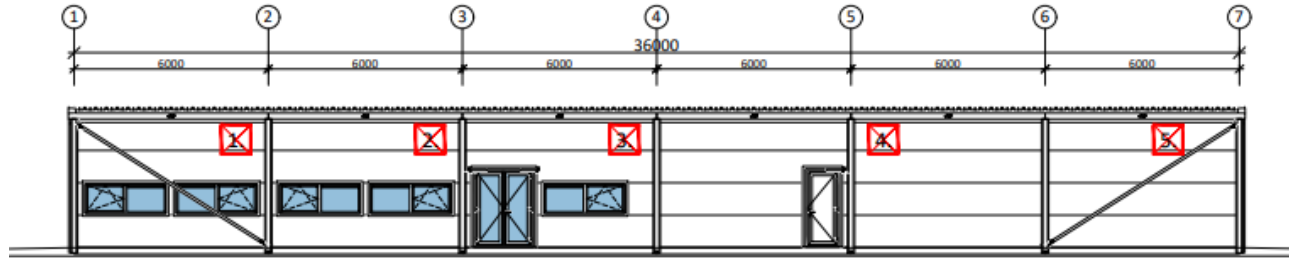
### DEFENSIVE PLANTING MIX

Botanical name	Common name	Age	Height	Root	% Mix	Total number
<i>Crataegus monogyna</i>	Hawthorn	1+1	80-100cm	Bare Root	50%	53
<i>Ilex aquifolium</i>	Holly	-	60-80cm	3L Container	10%	10
<i>Prunus spinosa</i>	Blackthorn	1+2	80-100cm	Bare Root	20%	21
<i>Pyracantha 'Orange glow'</i>	Firethorn	-	60-80cm	3L Container	20%	21
						105

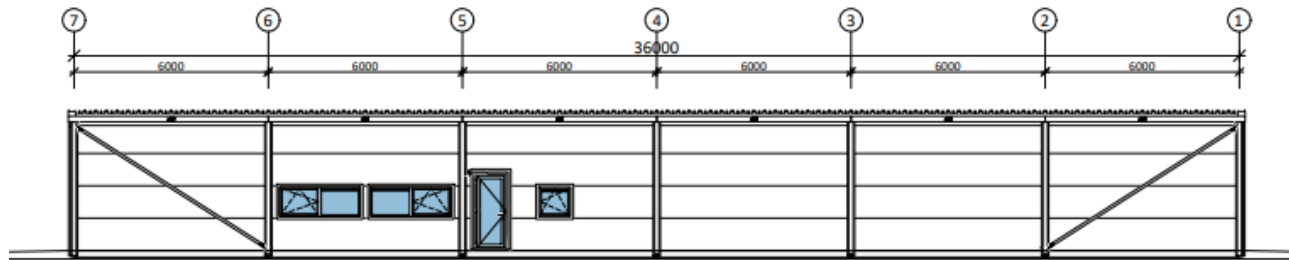
**Notes:**

- To be planted at 1 plant per m<sup>2</sup> with species in a random pattern. Total area to be planted = 105m<sup>2</sup>.
- Minimum number of breaks to be 2.
- 0.5m gap to be left between fence line and defensive planting, and between footpath and defensive planting.

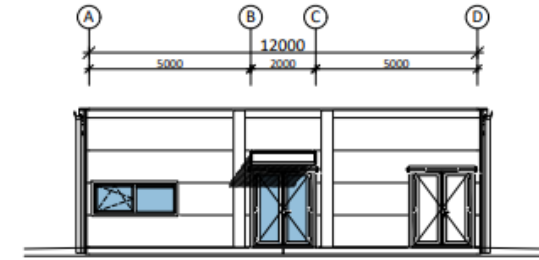
**Proposed planting**



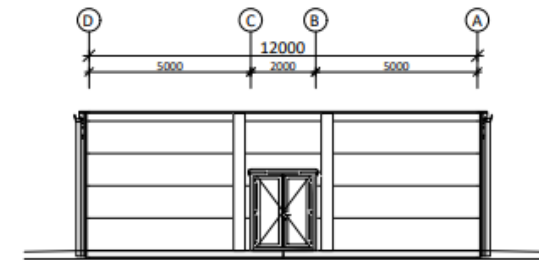
ELEVATION axis A



ELEVATION axis D



ELEVATION axis 7



ELEVATION axis 1

# Proposed elevations









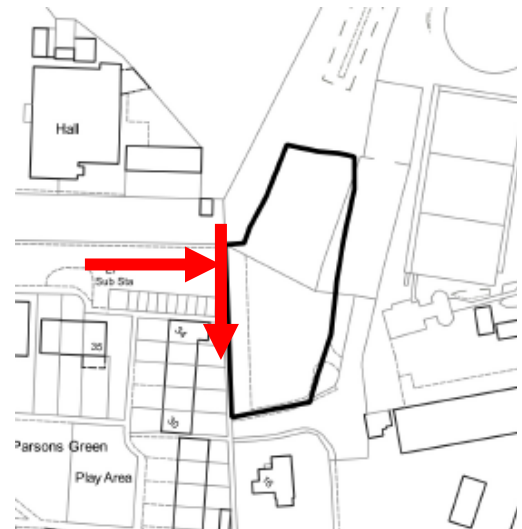








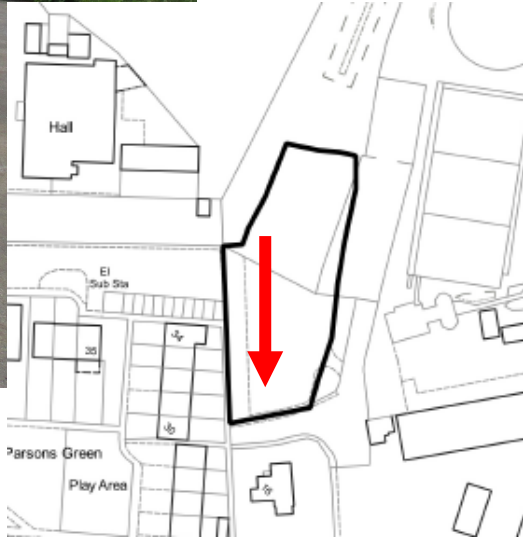












**21/P/00470**

**50 Charlock Way**

**Guildford**

**GU1 1XZ**

[Previous](#)

[Next](#)

[Home](#)



**Site location plan**

[Previous](#)

[Next](#)

[Home](#)





**Block plan**

[Previous](#)

[Next](#)

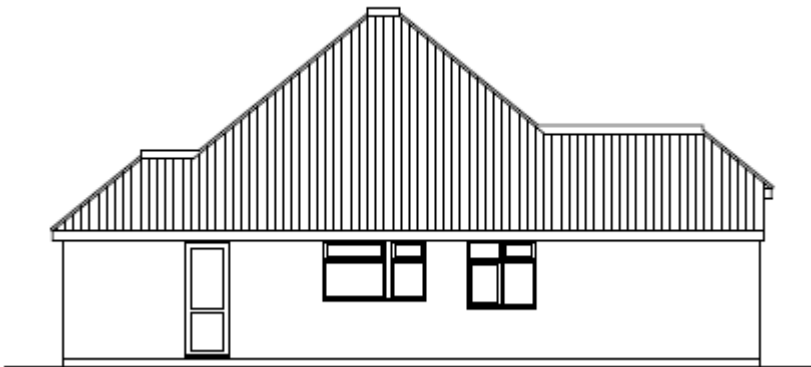
[Home](#)



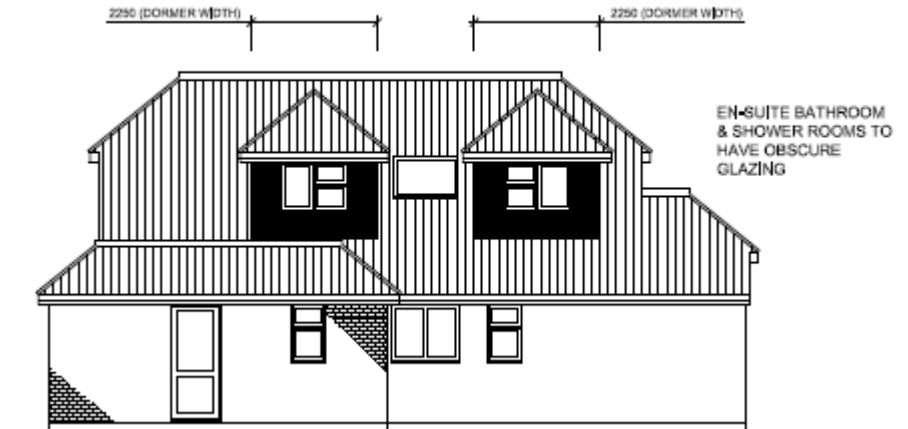
**Existing front elevation**



**Proposed front elevation**



**Existing side elevation**

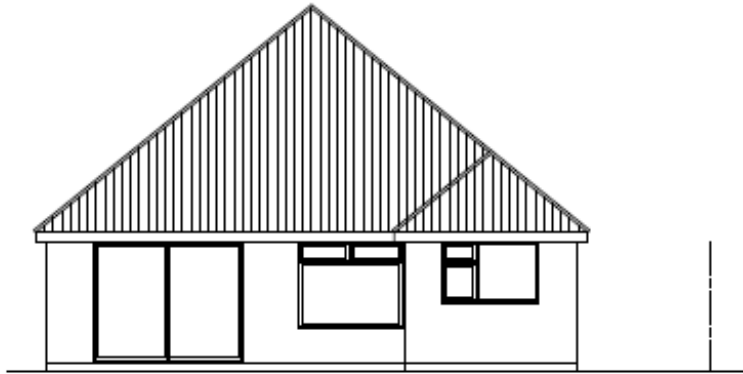


**Proposed side elevation**

[Previous](#)

[Next](#)

[Home](#)

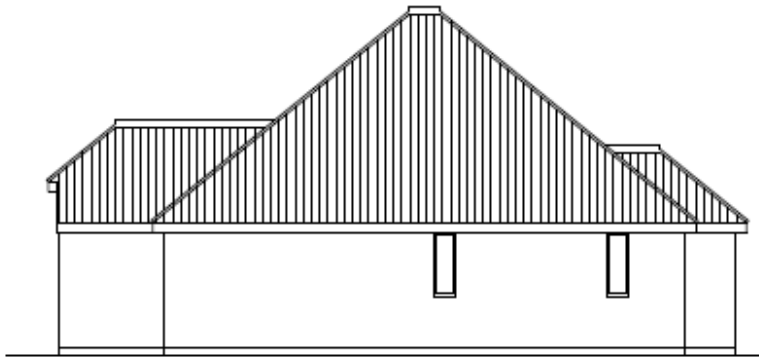


**Existing rear elevation**

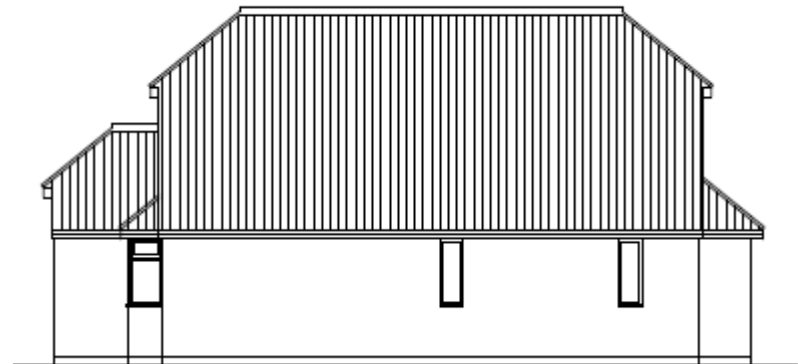


WHITE FINISH RENDER  
TO FIRST FLOOR  
EXTERNAL WALLS

**Proposed rear elevation**



**Existing side elevation**

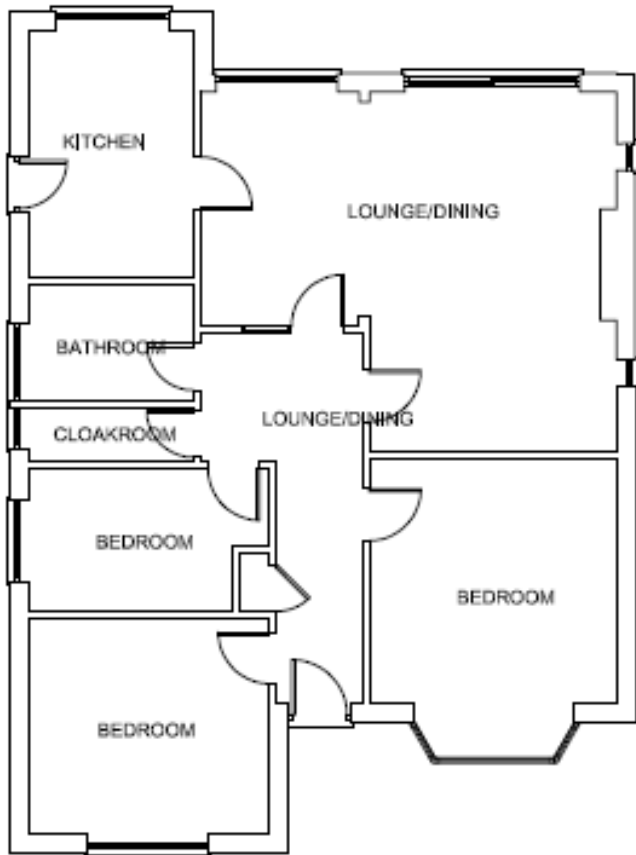


**Proposed side elevation**

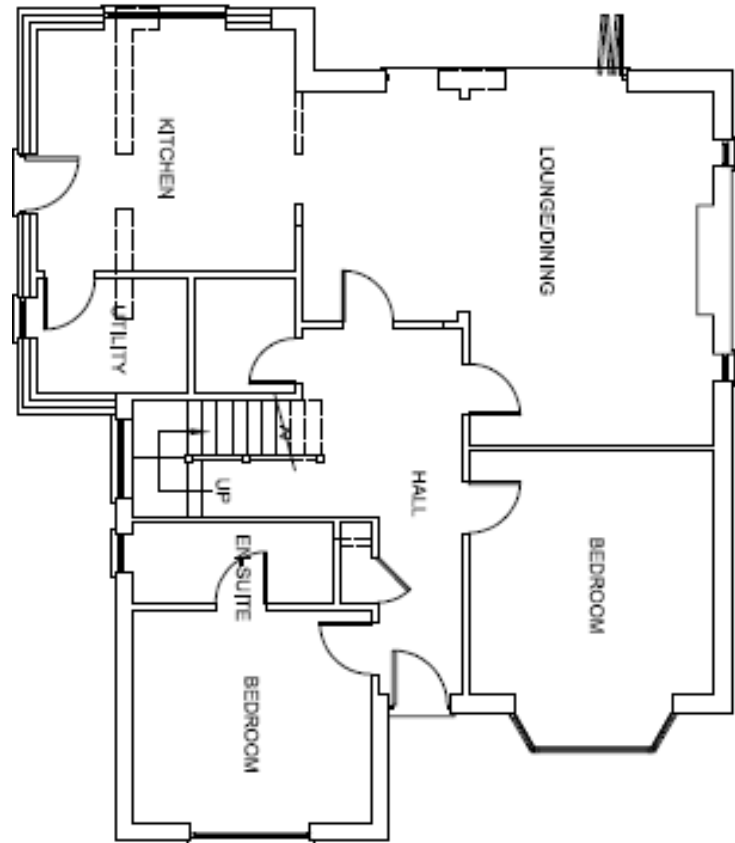
[Previous](#)

[Next](#)

[Home](#)



**Existing ground floor plan**



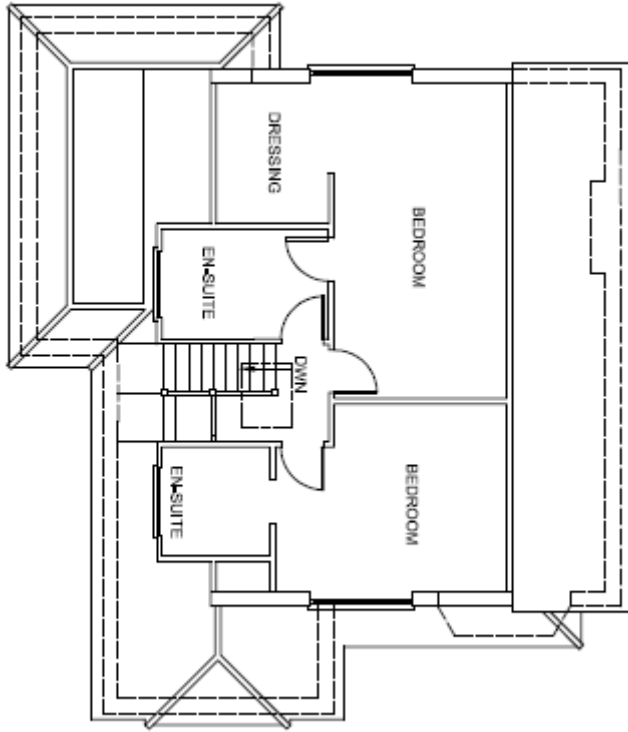
**Proposed ground floor plan**

[Previous](#)

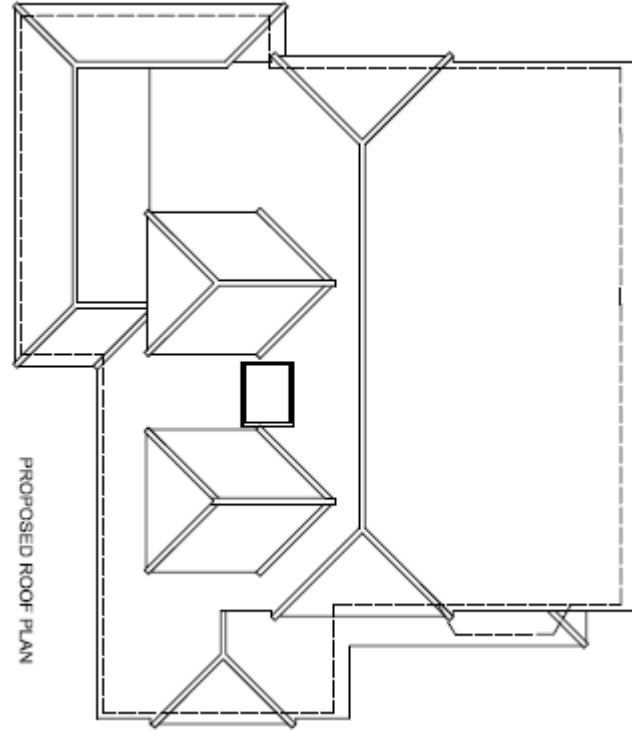
[Next](#)

[Home](#)





**Proposed first floor plan**



**Proposed roof plan**

[Previous](#)

[Next](#)

[Home](#)



[Previous](#)

[Next](#)

[Home](#)



[Previous](#)

[Next](#)

[Home](#)





[Previous](#)

[Next](#)

[Home](#)

[Previous](#)

[Next](#)

[Home](#)

This page is intentionally left blank

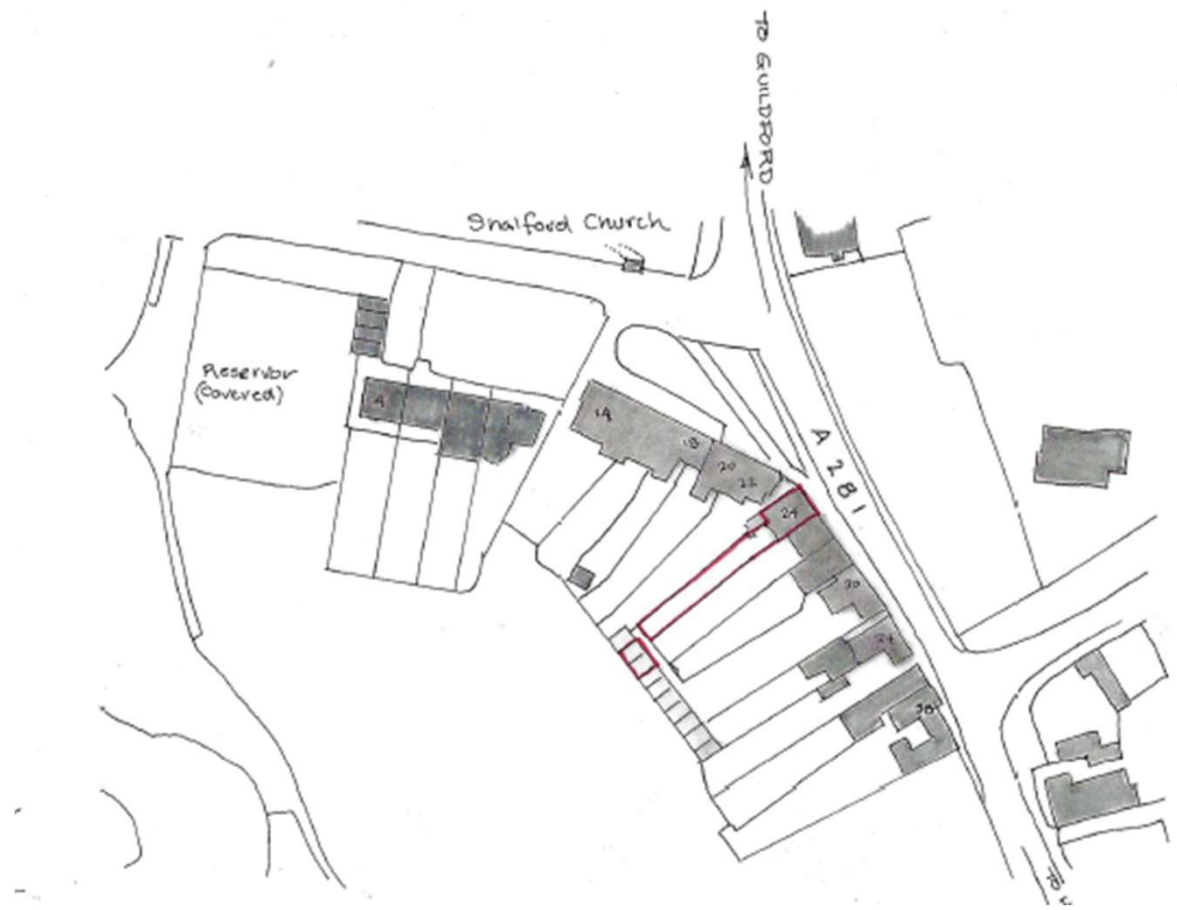
**21/P/00819**

**24 The Street  
Shalford  
Guildford  
GU4 8BT**

[Previous](#)

[Next](#)

[Home](#)



Location plan

[Previous](#)

[Next](#)

[Home](#)





1871 Ordnance Survey map extract showing No 7 – now renumbered to No.24



Site photo

[Previous](#)

[Next](#)

[Home](#)





Site photo

[Previous](#)

[Next](#)

[Home](#)



Site photo

[Previous](#)

[Next](#)

[Home](#)



Existing elevations and section

[Previous](#)

[Next](#)

[Home](#)



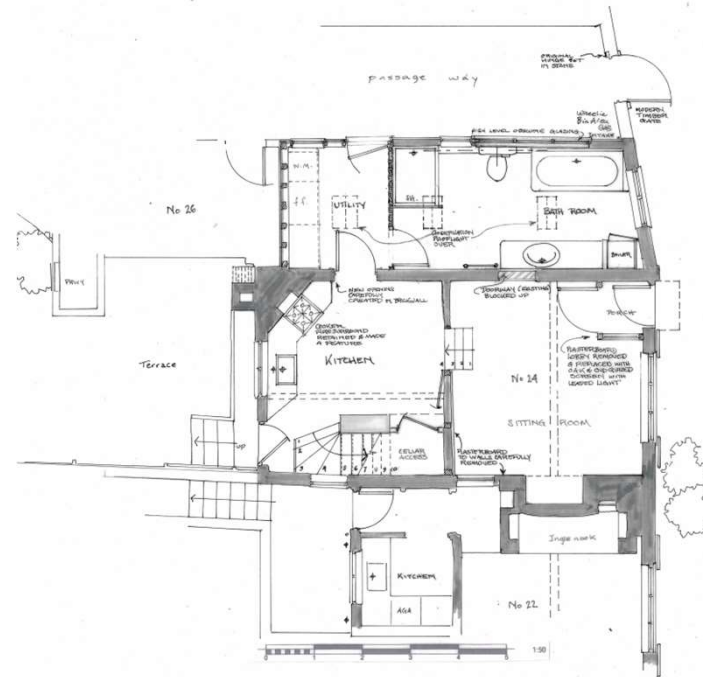
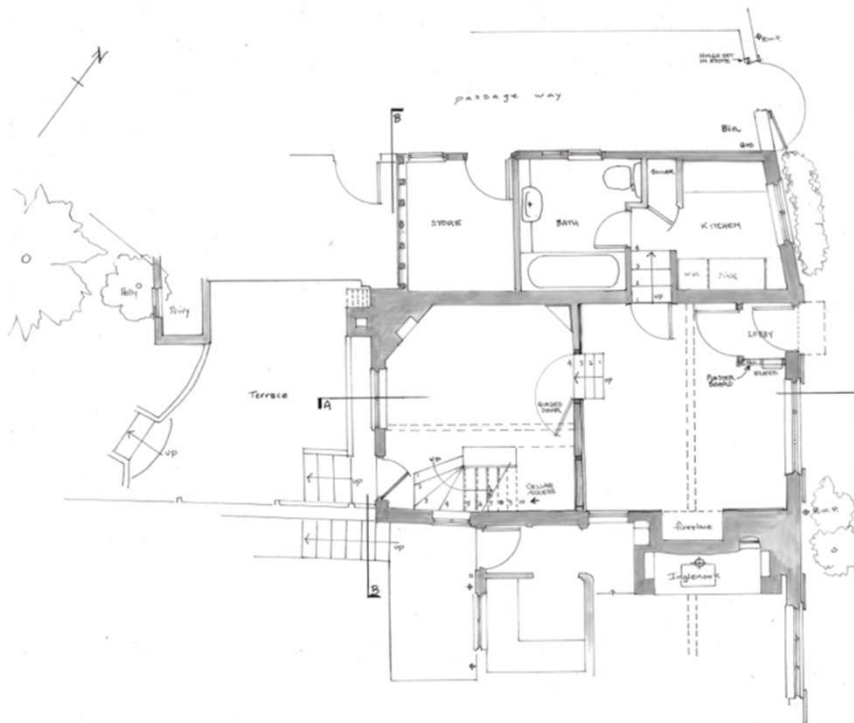


Proposed elevations and section

[Previous](#)

[Next](#)

[Home](#)



Existing and proposed ground floor plan

[Previous](#)

[Next](#)

[Home](#)

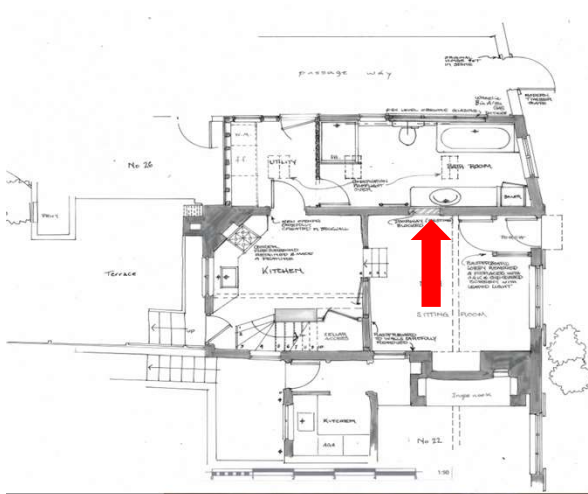


Figure 1: Steps to bathroom and kitchen currently located in the lean-to (to be blocked up)

[Previous](#)

[Next](#)

[Home](#)



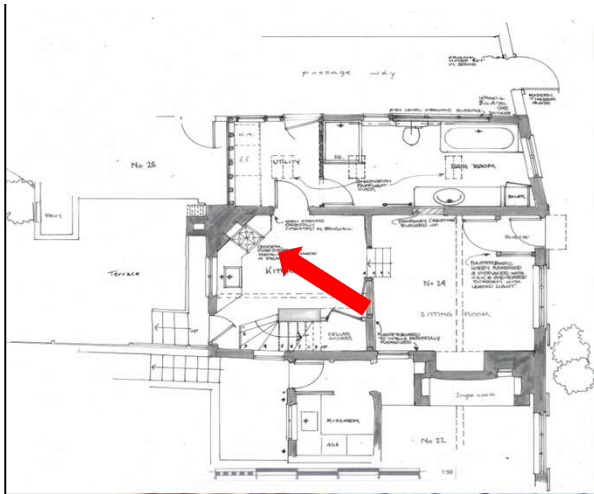


**Figure 2: Existing kitchen into the lean-to area that is proposed to from the new bathroom with new gas boiler in the far right-hand corner of this photograph with flue through the monopitched roof.**

[Previous](#)

[Next](#)

[Home](#)



**Figure 3: Back room that will form part of the new kitchen that has direct access to the rear garden. The sink will be placed under the window with views up the garden.**

[Previous](#)

[Next](#)

[Home](#)

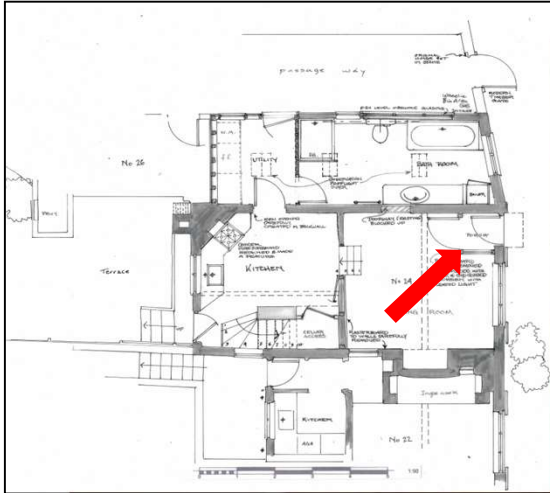


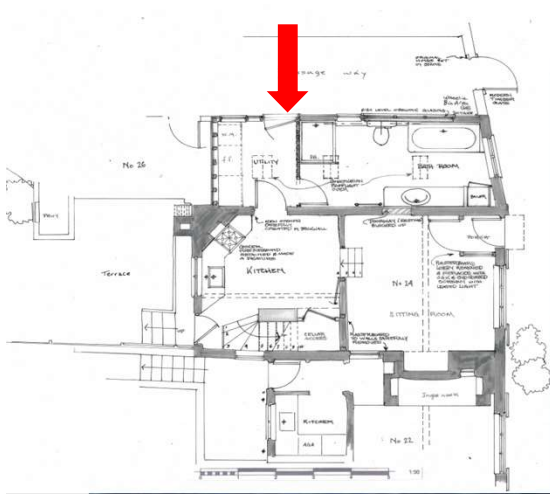
Figure 5: Plasterboard draft lobby to be replaced with an old oak joinery made draft lobby with leaded light side. Consumer unit (cpu) to be relocated within the rebuilt lobby.

[Previous](#)

[Next](#)

[Home](#)





**Figure 8: Doorway from the passageway into the proposed utility area. External featheredged weatherboarding to be retained where possible and thermal insulation added internally**

[Previous](#)

[Next](#)

[Home](#)



**1960's photograph showing the row of cottages to The Street, Shalford. The single storey lean-to with a chimney stack of No24**

[Previous](#)

[Next](#)

[Home](#)

This page is intentionally left blank